

Community Involvement

Co-existing with Communities

Policy and Concept

The Tokyo Tatemono Group believes improving regional value through various community and volunteer activities is not only part of community development but connects to the sustainable growth of our own business. Therefore, we are working to conduct various community

and volunteer activities by gathering participants from inside our Group, such as running events as city clean-up activities and community vitalization, to improve regional value in areas such as Yaesu, Nihonbashi, and Kyobashi where we own and manage real estate.

Yaesu, Nihonbashi, and Kyobashi Development Activity Results

List contributions in community development activities (January to December 2018)

Event name	Content of activity (contribution)	Group companies' employee participants
Sanno Festival	Carrying the portable shrines Sanno Festival, one of the three major festivals of Japan (Jun. 8 to 10)	3 days Total 656 participants
Sakura Festival	Holding rugby and other events (Apr. 6 to 8)	3 days Total 25 participants
Tokyo Station area clean-up team	Cleaning the Tokyo Station area (voluntary activity by Tokyo Tatemono Community Building Promotion Office Feb. 23, Apr. 20, Sep. 28)	3 days Total 531 participants
Chuo-dori clean walk (picking up garbage, re-planting flowers)	Picking up garbage and re-planting flowers beds in the Chuo-dori (Participated as office staff as well. Mar. 22, Jul. 19, Dec. 12)	3 days Total 55 participants
La Folle Journée TOKYO2018	Held area concert at Tokyo Square Garden (May 3 to 4)	2 days Total 8 participants
Tokyo Ekimachi Kirapika Project	Cleaning areas around Tokyo Station (Jul. 19, Nov. 29)	2 days Total 297 participants
Nihonbashi/Kyobashi Festival	Special sponsor, executive committee, organizing rugby team (Oct. 28)	1 day Total 11 participants
Art & Craft Market	Holding event at Tokyo Square Garden (once per month)	12 day Total 24 participants

Introduction of Clean-up Activities

The Tokyo Tatemono Group is regularly conducting cleanup activities by using time such as that before the start of work for urban beatification in multiple areas that include Yaesu where our the Tokyo Tatemono head office is located, Nihonbashi, and Kyobashi. These activities have been praised and received a letter of appreciation from the Nihonbashi Clean Business Cooperative.



Morning Cleaning Activities

Index	Message from the President	Feature	Corporate Philosophy and CSR	Environmental Initiatives
Safety & Security Initiatives	Responding to Social Change	Community Involvement	Utilization of Human Resource Assets	Improving Management System

Participating in Sanno Festival, One of the Three Major Festivals of Japan

The Tokyo Tatemono Group actively participates in the Sanno Festival, an important event in the area where the head office of Tokyo Tatemono is located, to pass down the traditional culture. The Sanno Festival is counted as one of the three major festivals in Japan along with the Tenjin Festival in Osaka and the Gion Festival in Kyoto. Many Group employees participate during the marching of 12 portable shrines through the Yaesu, Nihonbashi, and Kyobashi area. The Group employees take part in carrying the portable shrines and boasting the festival with members of local neighborhood association members.

CSR Website Feature: Tokyo Tatemono Urban Development Activities (Published 2017)
<https://www.tatemono.com/csr/special/townplanning.html>



Sanno Festival

Partnering with Non-profit Organizations

Tokyo Tatemono helps take care of flower beds of sidewalks along Chuo-dori as a member of the NPO Hana Kaido. We also work with the Cheering Supporters for the Woods of "Chuo City" to help use the trimmings from the woods in the Chuo Ward at other sites of their activities. We produced planter filler from the trimmings while contributing to the beautification of the city, such as setting up roughly 100 flower beds on sidewalks around construction sites through the NPO Hana Kaido.



Replanting Flower Beds Along Chuo-dori

Index	Message from the President	Feature	Corporate Philosophy and CSR	Environmental Initiatives
Safety & Security Initiatives	Responding to Social Change	Community Involvement	Utilization of Human Resource Assets	Improving Management System

Bustling Creation in the Region

The Tokyo Tatemono Group holds various events to drive bustling creation as a way to contribute to the growth of the region.

Nakano Central Park uses the approximately 3 ha of richly green open space (open public space, etc.) provided together with the neighboring university and government agencies to hold events, such as flea markets and workshops. This initiative that effectively uses and brings excitement to this open space received the Good Design Award in the Design of Community Development category in 2014.

Tokyo Square Garden has regularly held the Kyobashi Market since August 2018 to sell fresh vegetables and processed foods by using the 1F connecting corridor. Brillia Towers Meguro redevelopment association proposed and held the Meguro Hanabusayama Foresta 2018 as an event to celebrate the new town. The Tokyo Tatemono Group also acted as a founding sponsor and opened a booth.



The Tokyo Tatemono booth at the Meguro Hanabusayama Foresta 2018 offered a ring toss for both adults and children to enjoy.

Developing Communities in Regions People Will Call Home

The on-site model room for Brillia Shinagawa Minamioi that opened in October 2018 set up the Loco-café "oooi" as a community gathering place everyone in the neighborhood may use inside a sales center before construction began on the condominium with the hope of quickly developing a community in the region for everyone who planned to buy one of the units. The café added a contact point with everyone from the local community. We also held other events to encourage interaction with everyone who planned to buy a unit at Brillia Shinagawa Minamioi in addition to renting a gathering space for the local community. These efforts supported the smooth and rapid development of a community for everyone who planned to buy one of these Brillia units by encouraging interaction with the local community.



Inside Loco-café "oooi"

Index	Message from the President	Feature	Corporate Philosophy and CSR	Environmental Initiatives
Safety & Security Initiatives	Responding to Social Change	Community Involvement	Utilization of Human Resource Assets	Improving Management System

Cultural and Social Contribution Activities

Policy and Concept

The Tokyo Tatemono Group believes realizing an affluent society through various cultural and social contribution activities helps the sustainable growth of our own businesses. Therefore, we engage in a variety of social contribution

activities, such as cultural and arts activities, educational support, sports promotion, and disaster recovery support. We contribute urban development, community building in addition to building an affluent society as a member of the local community.

Artist Support at THE GALLERY in the Brillia LOUNGE

Tokyo Tatemono is providing support for various cultural activities such as arts and sports. As part of these activities, we operate THE GALLERY as an exhibition space setup in a corner of the Brillia LOUNGE on the first floor of the Tokyo Tatemono Yaesu Building as a place to introduce up-and-coming artists and their artwork. THE GALLERY introduced works from four groups of artists in 2018. In addition, the Brillia ART AWARD 2019 was held to determine the artists to introduce the next year through a public offering. This award not only judges complete artworks but also production plans. Winners are given a production grant of 200,000 yen and the grand prize winner receives 300,000 yen. The works that are created are rotated and displayed every three months throughout 2019.

For more information about THE GALLERY in Brillia LOUNGE and Brillia ART AWARD, see:
<https://brillia.com/brillia/topics/>
<https://www.brillia.com/artaward/index.html>



Works by Artists Introduced in 2018

Index	Message from the President	Feature	Corporate Philosophy and CSR	Environmental Initiatives
Safety & Security Initiatives	Responding to Social Change	Community Involvement	Utilization of Human Resource Assets	Improving Management System

Opening Locations to Support Sustainable Urban Development

Tokyo Square Garden owned and managed by Tokyo Tatemono has opened a location to advocate low carbonization of the city called Kyobashi Environmental Station on the sixth floor. The Kyobashi Environmental Station exhibits environmental technologies as well as holds seminars about the environment and urban development. We also opened the City Lab Tokyo as a sustainable city development site as part of the renovations done in December 2018. City Lab Tokyo offers both co-working space and conference room functions while contributing to cultivating a start-up community and business development.

→ Please also see Feature Learn, Connect, Act Community Building through Creating "Spaces" **P.5**

More Information About City Lab Tokyo
Official website: <https://citylabtokyo.jp/>
Official Facebook page
<https://ja-jp.facebook.com/citylabtokyo/>



City Lab Tokyo Co-working Space

Supporting Disabled Sports

Tokyo Tatemono has been an official partner of Japan Parasports Association since August 2015 as part of its social contribution activities.

We will actively support para-sports through initiatives to popularize para-sports and take part in realizing the philosophy of para-sport for creating a vibrant coexisting society.

In 2018, we promoted people to watch the events by broadcasting event and competition information inside the Group and reaffirmed the recognition of para-sports in an even greater number of employees by watching and cheering on the competitions.

Moreover, we acquired the naming rights to the Shin-Toyosu Brillia Running Stadium track and field facility that opened in December 2016 and cooperate in operating the facility. The Shin-Toyosu Brillia Running Stadium combines an artificial sports leg development laboratory where people with disabilities can train side-by-side with everyone else.



Interested Employees Gathered to Watch a Competition



Shin-Toyosu Brillia Running Stadium

Index	Message from the President	Feature	Corporate Philosophy and CSR	Environmental Initiatives
Safety & Security Initiatives	Responding to Social Change	Community Involvement	Utilization of Human Resource Assets	Improving Management System

Earthquake Reconstruction Support Through Rice Planting

The Tokyo Tatemono Group aims to build an affluent society through reconstruction after the Great East Japan Earthquake and interaction between the city and farming villages, and it supports rice planting activities for the local Teneimai rice from Ten-ei village in Fukushima Prefecture. Hatoriko Highland Regina Forest Co., Ltd. owned by Tokyo Tatemono Group up until 2016 was located on the outskirts of Ten-ei Village, which began support and other activities with roughly 100 employee volunteers participating. Employees and their families experience farming such as the rice-planting in spring, cutting weeds in summer, and the harvest in fall while interacting with the local farmers. The company and these individuals are unified in deepening their understanding of Ten-ei Village and supporting the reconstruction of Fukushima from Ten-ei Village through these activities.



Participants of harvesting rice

Supporting Patients with Incurable Diseases and Their Families

Apartments Tower Kachidoki rental condominiums owned by Tokyo Tatemono has concepts to both support the raising of children and to co-exist with the community. The building provides facilities such as certified childcare, family house, pediatric clinic, and residence for a generation raising children.

The family house, which is operated by the NPO Family House*, is a second home to use as a residence facility for families that travel to urban hospitals from afar to care for their children with intractable diseases such as pediatric cancer.

Tokyo Tatemono is empathetic to this activity and provides a 130 m² house free of charge that is equipped with two Japanese-style rooms and a common room in the Apartments Tower Kachidoki close to the National Cancer Center Hospital and St. Luke's International Hospital.

*A certified non-profit organization (NPO) is an organization that receives tax incentives to encourage donations to the organization. NPOs can only be established through the certification system, but the organization must have a certain activity periods and needs to pass an evaluation by a competent authority.



Common Room for Two Families to Spend Leisure Time

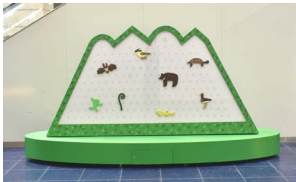
Donations for Damage from the Torrential Rains in Western Japan

Tokyo Tatemono Group has donated five million yen through the Japanese Red Cross to support reconstruction after

the grave damage suffered in the torrential rains that struck primarily western Japan in July 2018.

Fundraising Activities Integrating Art

SMARK Isesaki began a new social contribution activity that takes into consideration contributions to the local region by integrating art in conjunction with the renewal for the 10-year anniversary in 2018. We installed the "coins" Communication Art Collection Box for Jomo-Sanzan (Mt. Akagi, Mt. Haruna, and Mt. Myogi in Gunma Prefecture) created by Artist Jin Hasegawa. We donate the money that is collected to environmental organizations in Gunma Prefecture in conjunction with the commemorative festival held every November.



coins Myogi (Upper Left)
coins Haruna (Upper Right)
coins Akagi (Lower Left)