

Corporate Data / Board of Directors / Organization

Corporate Data

Company Name	Tokyo Tatemono Co., Ltd.
Date of Establishment	October 1, 1896
Capital	92.4 billion yen (as of December 31, 2023) Prime Market in Tokyo Stock Exchange
Main Businesses	Development, leasing and management of office buildings, commercial facilities, and others Development, sales, leasing and management of condominiums and detached houses Sale/purchase, brokerage and consulting for real estate; parking lot development and management Leisure business, Logistics facilities development, asset management business, overseas business, and real estate appraisal
Licenses	Building Lots and Buildings Transaction Business License / Land, Infrastructure, Transport and Tourism Minister License (17) No.6 Licensed Real Property Appraiser Registration / Tokyo Governor Registration (4) No.2158 First-class Architect Office Registration / Tokyo Governor Registration No. 203 Special Construction Operator Permission / Land, Infrastructure, Transport and Tourism Minister Permission (Toku-2) No. 25772 Permission to engage in a Real Estate Specified Joint Enterprise / Financial Services Agency Commissioner and Land, Infrastructure, Transport and Tourism Minister Permission No.11, and others
Member Associations	The Real Estate Companies Association of Japan Japan Building Owners and Managers Association Japan Association of Real Estate Appraisers, and others
Number of Employees	807 (as of December 31, 2023)
Head Office	1-4-16 Yaesu, Chuo-ku, Tokyo 103-8285 Phone: (03) 3274-0111 (Representative) *The head office location on the commercial registration is 1-9-9 Yaesu, Chuo-ku, Tokyo
Kansai Branch	3-4-8 Honmachi, Chuo-ku, Osaka-shi, Osaka 541-0053 Phone: (06) 7711-0222 (Representative)
Kyushu Branch	2-8-36 Tenjin, Chuo-ku, Fukuoka-shi, Fukuoka 810-0001 Phone: (092) 761-0110 (Representative)
Nagoya Branch	2-20-8 Nishiki, Naka-ku, Nagoya-shi, Aichi 460-0003 Phone: (052) 202-0301 (Representative)
Website	www.tatemono.com/english/

Board of Directors

(as of April 1, 2024)

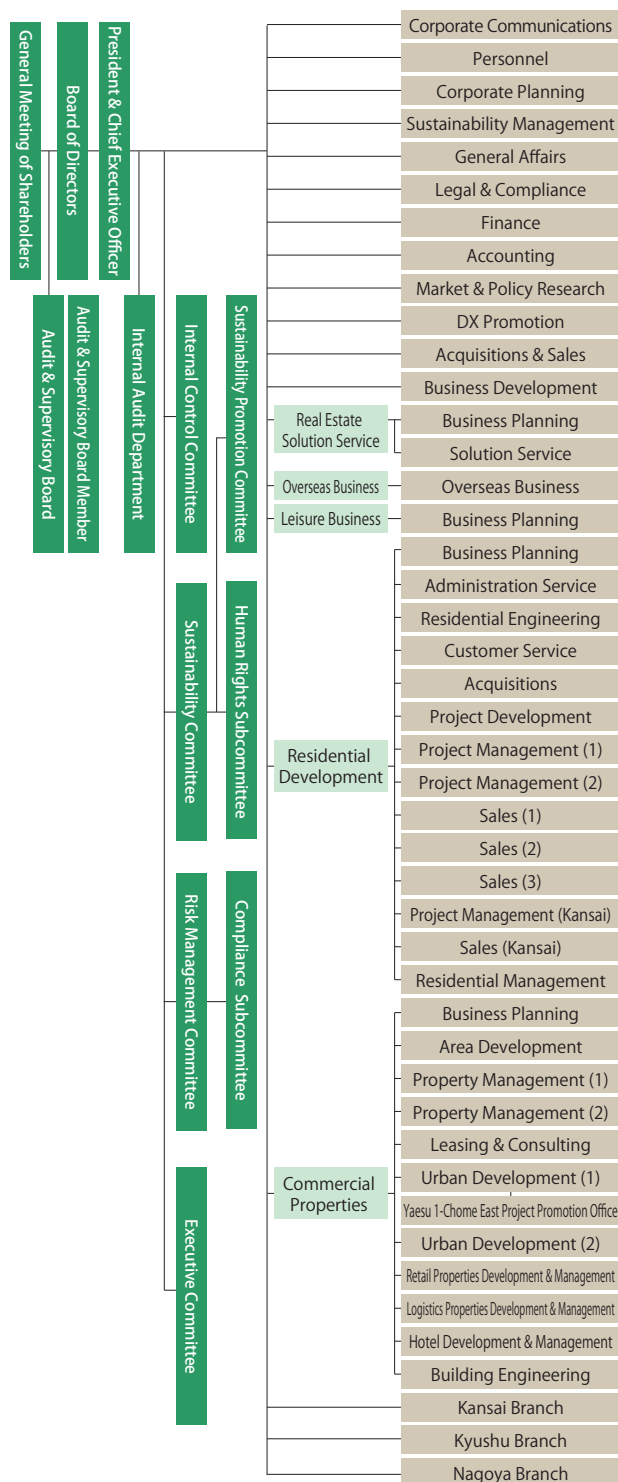
Directors		Managing Officers	
Representative Director Chairman of the Board	Makio Tanehashi	President & Chief Executive Officer	Hitoshi Nomura
Representative Director President & Chief Executive Officer	Hitoshi Nomura	Senior Managing Executive Officer	Katsuhito Ozawa
Representative Director Senior Managing Executive Officer	Katsuhito Ozawa	Senior Managing Executive Officer	Akira Izumi
Representative Director Senior Managing Executive Officer	Akira Izumi	Senior Managing Executive Officer	Hisayoshi Kato
Director Senior Managing Executive Officer	Hideshi Akita	Senior Managing Executive Officer	Hideshi Akita
Director Managing Executive Officer	Takeshi Jinbo	Managing Executive Officer	Takeshi Jinbo
Director Managing Executive Officer	Shinjiro Kobayashi	Managing Executive Officer	Shinjiro Kobayashi
Director Managing Executive Officer	Fumio Tajima	Managing Executive Officer	Hiroshi Takahashi
External Director	Shuichi Hattori	Managing Officer	Fumio Tajima
External Director	Yoshimitsu Onji	Managing Officer	Masayuki Okubo
External Director	Takeo Nakano	Managing Officer	Masayuki Okubo
External Director	Yumiko Kinoshita	Managing Officer	Masayuki Okubo
		Managing Officer	Kazuki Sugise
		Managing Officer	Yusuke Mishima
		Managing Officer	Yusuke Mishima
		Managing Officer	Katsuhiko Tamai
		Managing Officer	Katsuhiko Tamai
		Managing Officer	Shigeru Sabayashi
		Managing Officer	Shigeru Sabayashi
		Managing Officer	Hiroto Fukui
		Managing Officer	Hiroto Fukui
		Managing Officer	Kenji Sugaya
		Managing Officer	Kenji Sugaya
		Managing Officer	Yuichi Kawazoe
		Managing Officer	Yuichi Kawazoe
		Managing Officer	Yutaka Onuma
		Managing Officer	Yutaka Onuma
		Managing Officer	Yuji Araki
		Managing Officer	Yuji Araki
		Managing Officer	Satoru Kondou
		Managing Officer	Satoru Kondou
		Managing Officer	Takashi Endou
		Managing Officer	Takashi Endou
		Managing Officer	Keihiro Ochi
		Managing Officer	Keihiro Ochi

Audit and Supervisory Board Members

Audit & Supervisory Board Member	Takashi Yoshino
Audit & Supervisory Board Member	Isao Jinno
Audit & Supervisory Board Member (Independent)	Sayaka Hieda
Audit & Supervisory Board Member (Independent)	Naohiro Chikada

Organization

(as of April 1, 2024)

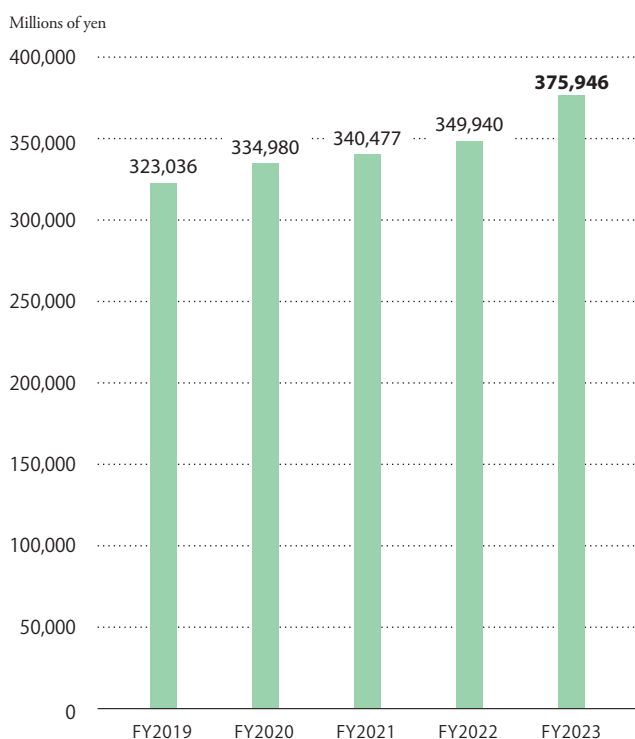


Financial Highlights

Consolidated Business Results

	FY2019	FY2020	FY2021	FY2022	FY2023
Revenue from operations (Millions of yen)	323,036	334,980	340,477	349,940	375,946
Operating income (Millions of yen)	52,410	49,631	58,784	64,478	70,508
Recurring income (Millions of yen)	44,611	47,072	46,270	63,531	69,471
Net income (Millions of yen)	29,796	31,795	34,965	43,062	45,084
Total assets (Millions of yen)	1,564,049	1,624,640	1,650,770	1,720,134	1,905,309
Owner's equity (Millions of yen)	375,008	389,364	417,055	445,994	496,900
Owner's equity ratio (%)	24.0%	24.0%	25.3%	25.9%	26.1%
Owner's equity per share (Yen)	1,794.15	1,862.81	1,996.52	2,135.08	2,378.61
Net income per share (Yen)	141.59	152.12	167.35	206.15	215.82
Dividend per share (Yen)	41.00	46.00	51.00	65.00	73.00

Revenue from operations



Operating income · Net income

